

**iKASU**™



**USB 2.0 DVB-T TV DONGLE**

**MODEL - DM077699**

Table of Contents ..... 1

Functions and Accessories ..... 2

Functions and Remote Control..... 3

Installing Software and Drivers.....4-11

Scanning for Channels ..... 12

Blaze Tool Bar Operation .....13-14

Viewing and changing channels..... 14

Time Shift and Recording ..... 15

Pre-recording Set up..... 16 – 17

Advanced Options and Settings .....18- 20

Frequently Asked Questions/Technical Specifications ..... 21

Technical Support ..... 22

Fault Report Card..... 23

- Never attempt to fix the dongle yourself by opening and disassembling the unit as this will affect your guarantee.
- Keep out of reach of young children as the unit contains small parts.
- Avoid dropping as the unit contains sensitive equipment.
- Do not expose the dongle to damp or moist conditions



Do not dispose of this product in your household waste. Contact your local authority for details of local recycling schemes

Remote Control



CD Installation Disk



Portable Antenna



- Watch and record free-to-air digital TV program on your PC
- Listen and record DVB-T digital radio on your PC
- DVR& Schedule Recording
- Time-Shift
- Still Frame Capture
- Favorite channels set up
- Multi-language Support
- Full function remote control



Power off/on



Mute off/on



Subtitles on/off



Display Last Channel



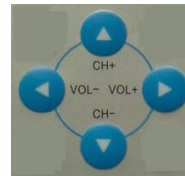
Begin Time shift



Record on

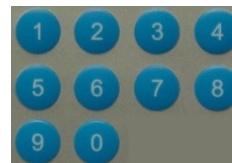


Stop recording



Channel +/-

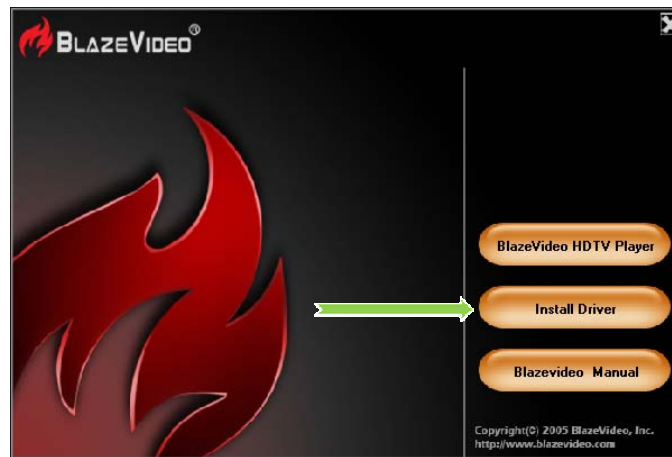
Volume +/-



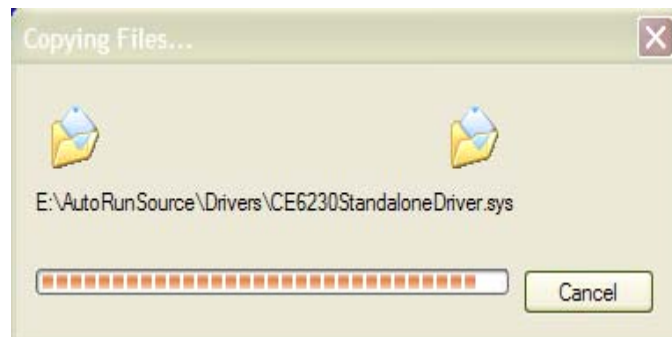
Numeric buttons

Before you can start using the usb dongle you will have to install the drivers followed by the blaze software by doing the following. You must install both before plugging your dongle into the usb port.

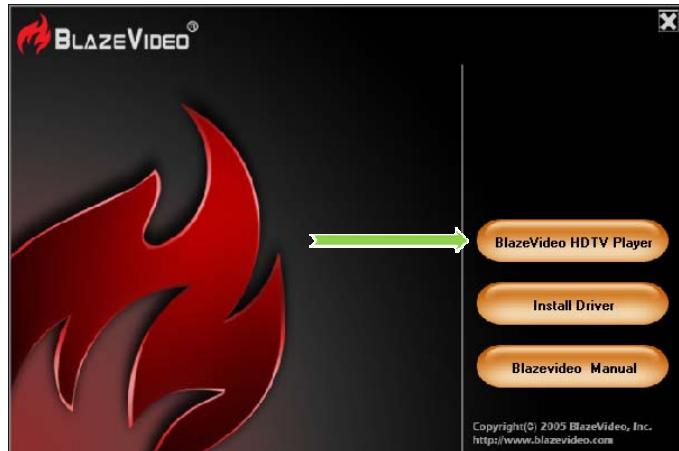
1 – Insert the supplied cd which should then start the install page. Select Install Driver.



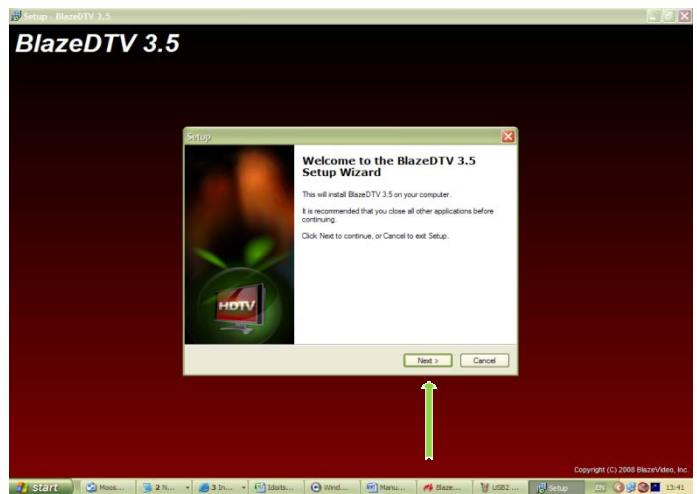
2 – You should now see a box displaying files being carried from the disc to your PC. This will only take a few moments to complete.



3 – Now your drivers are installed go back to the pop install page and now select Blaze HDTV Player to the install the software.



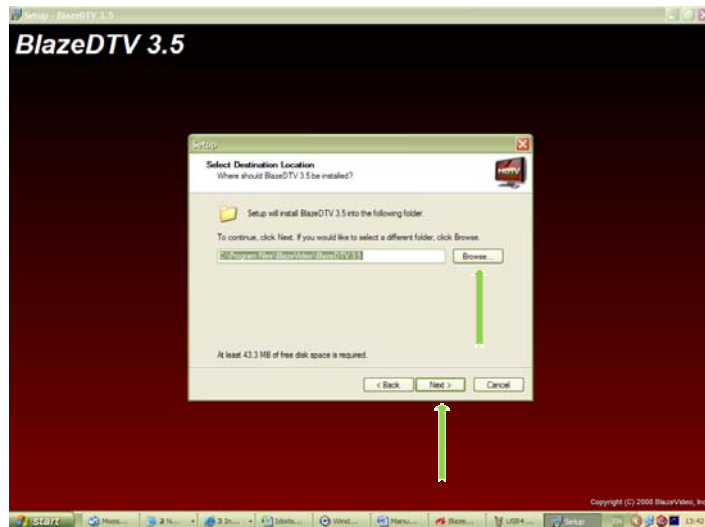
4 – You will now get the following pop up, select next to continue.



5 – Now read the terms and conditions and select agree, then click on next to continue.



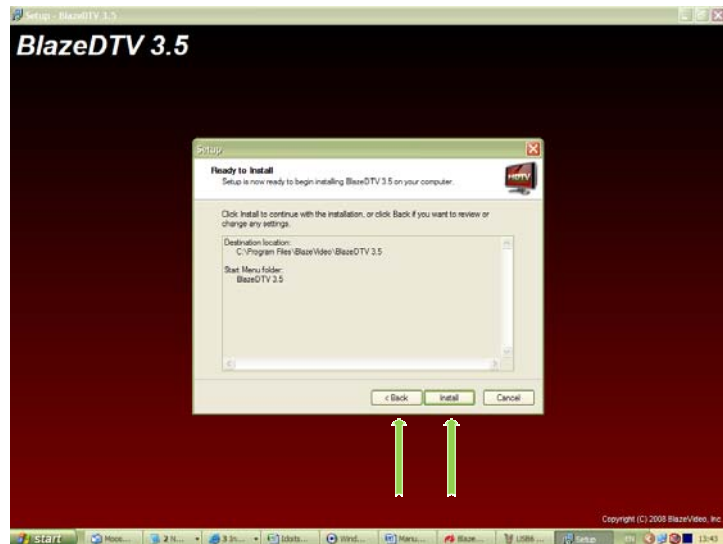
6 – You will now be prompted where you want the software to be installed, select your desired folder by clicking on browse which will allow you to select your folder. Once selected click on next to continue



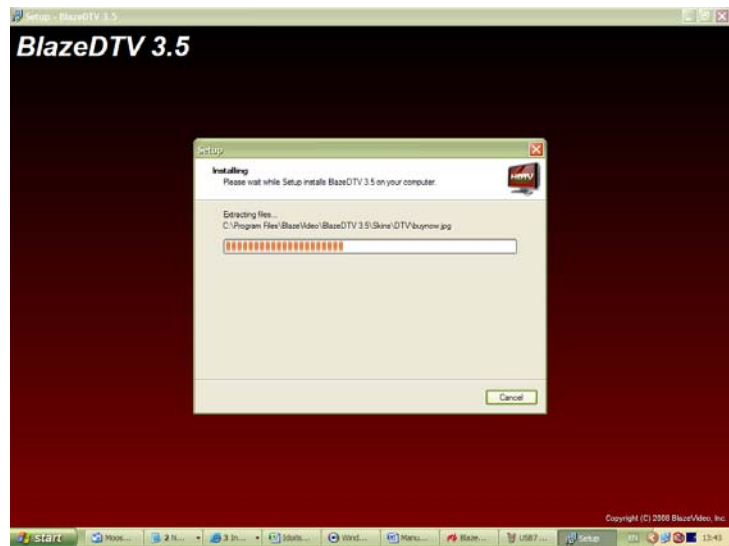
7 – You will now be prompted where you want the software to be available to begin using, select your desired location by clicking on browse which will allow you to select your location. Once selected click on next to continue.



8 – Check that the information displayed is correct and select next to continue, if you wish to change any of the information press back and change accordingly.



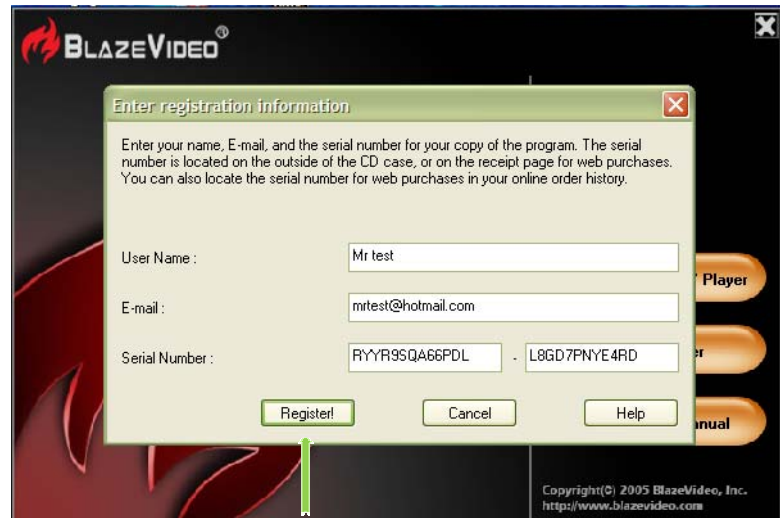
9 – The blaze software will now install into your PC.



10 – Once installation is completed you can either tick or un-tick the readme file and the launch Blaze TV then click on finish.



11 – Before you can begin to use Blaze you must register. To do this fill in the information required when prompted. User name (your name), email address (must be a valid email address) and serial number (This will be found on the sleeve of the supplied CD. Then select Register.

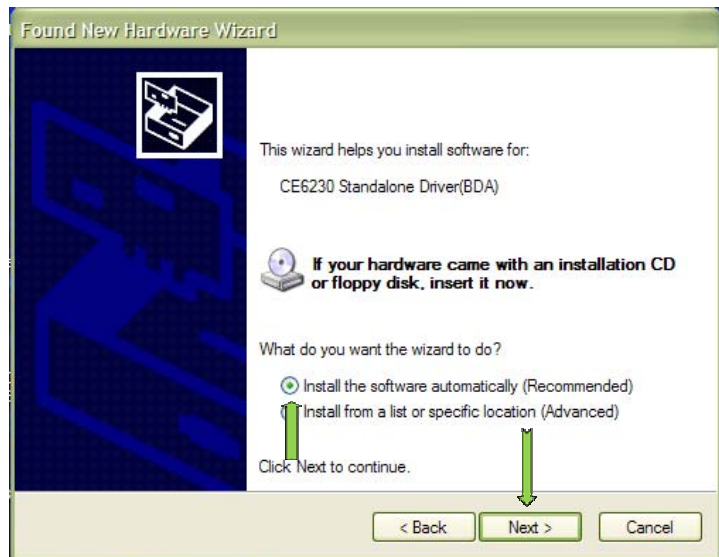


12 – Now that blaze and its drivers are installed you can safely insert the usb dongle.

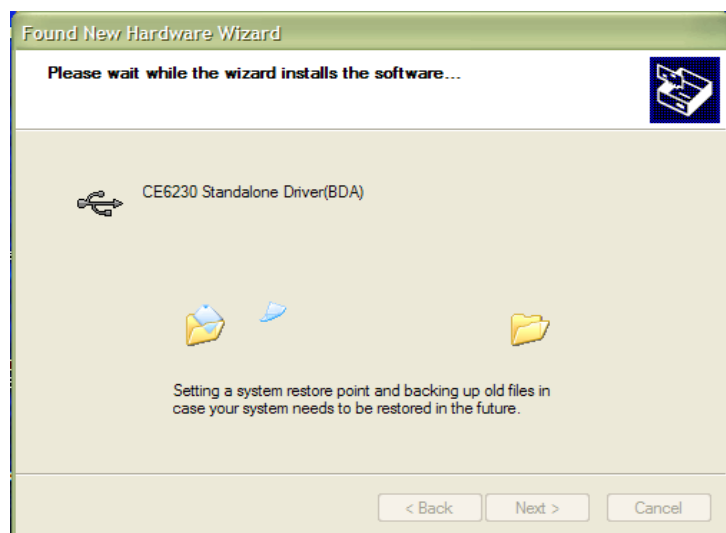
When you do you will get the following prompt. From here select "No, not this time" and press Next to continue.



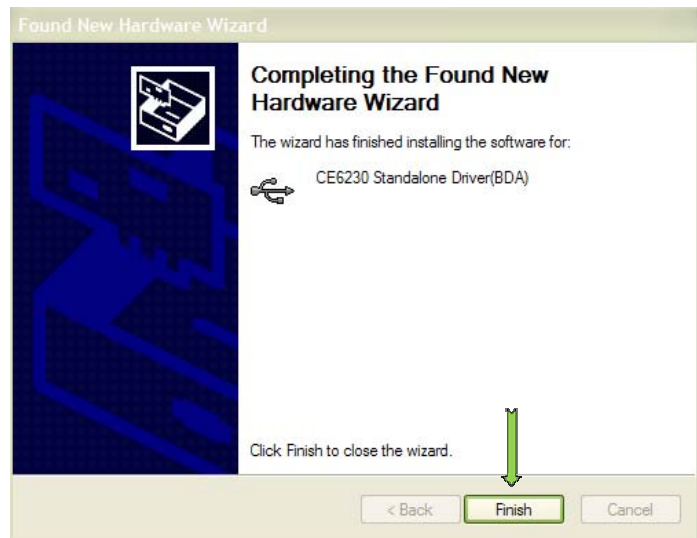
13 – Now select “Install the software automatically” and press next to continue.



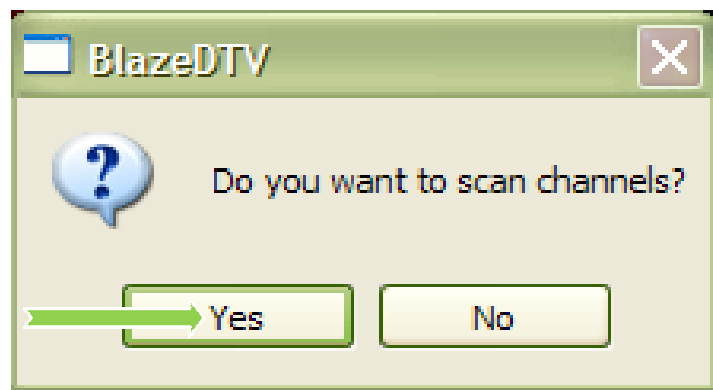
14 – Your PC will now apply the drivers you installed into the USB dongle connection.



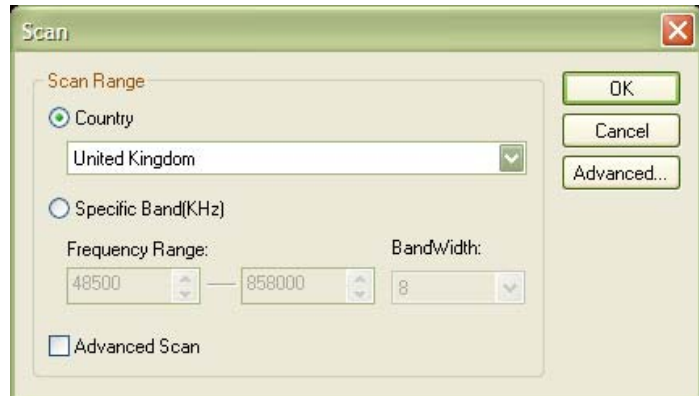
15 – Once your driver merge is complete click on the finish button to complete the process.



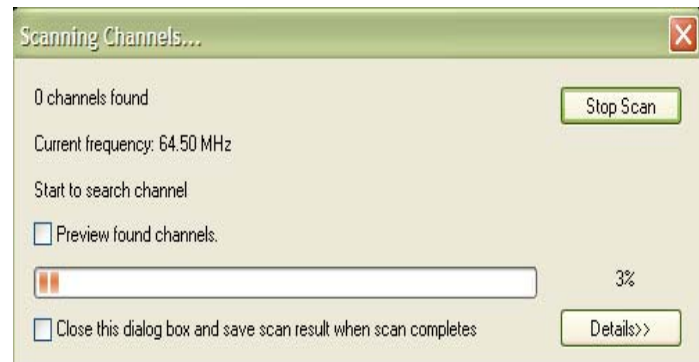
16 – Finally once you have finished the software and driver install, start up the blaze (unless you auto started from part 10). You will then see an option asking if you want to scan for channels. **Before you start your scan make sure your house aerial is plugged into the usb dongle (as this will give you the strongest signal to pick up most of the channels) then press YES.**



1 – After pressing yes on step 16 on installing software and drivers you will now be presented with the following options. Depending on your location first select the country then click on OK to continue with the scan.













2 – You will now start to see a scanning bar climb through the current available frequencies, when the signal has found the number of channels found will start to increase. Once completed you should then have be able to view the first channel that it scanned in.





Now that Blaze is fully installed and your channel scan is complete you are ready to start using the full functions of your DVB tuner. Let's start by looking at the general tools and functions of Blaze.


Button/Icon	Name	Description
	Audio	Select Audio
	Capture	Capture video as .bmp still image
	Volume Control	Drag slider bar to adjust volume
	Mute	Turn on/off audio
	Media Type	Display playback type
	Playback status	Display playback status
	Signal Quality	Display HDTV signal quality
	Signal Strength	Display HDTV signal strength
	Channel/chapter	Display current HDTV channel / DVD chapter
	Time	Display current time of HDTV / DVD
	Fast backward	Fast backward, switch between 1X, 2X, 4X, 8X, 16X at each press
	Slider bar	Drag the slider to new position for playback.
	Fast Forward	Fast forward, switch between 1X, 2X, 4X, 8X, 16X at each press
	Open Floating Panel	Show Floating Panel
	Show Advanced Panel	Show/Hide Advanced Panel

Button/Icon	Name	Description
	EPG	Open HDTV EPG window
	Play	Play HDTV or Media
	TimeShift/Pause	TimeShift (for HDTV) or pause playback
	Stop	Stop playback
	Record	Record HDTV or DVD
	Previous	Skip to play previous HDTV channel / DVD chapter
	Browse	Browse channel
	Next	Skip to play next HDTV channel / DVD chapter
	Open	Select playback type
	Subtitles	Select Subtitles





Now that you know your way around the Blaze toolbar and its functions lets take a look at how to navigate through watching and changing channels.

**Selecting a Channel:** In order to change your channel you can either select the ch+ or ch- on your Remote control or on the Blaze Toolbar. You can also click on the browse button  on the blaze toolbar which will bring a list of all available channels up, simply left click on the desired channel to change.

You can also click on the EPG  button on the Blaze toolbar which as the browse will bring up a list of all available channels as well as detailing what is currently on that channel, again left click on the desired channel to change.

If you want to return to your previous channel then press the  on the Blaze Toolbar or the last CH button on the remote.



TimeShift means you can pause watching a live program to have a break, when you come back you can then resume watching from the point at which you paused.

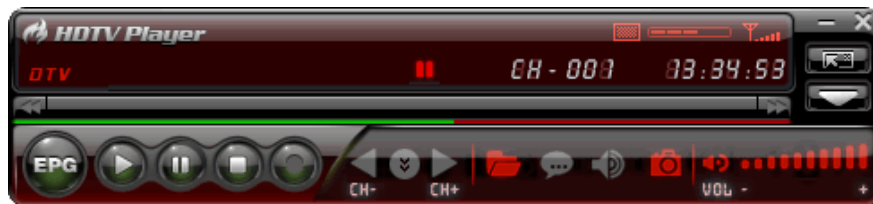
- Click  to pause, The video screen will freeze, but the recording will continue.
- Click  again or click  to continue watching TV show from the point at which it was paused.
- Click  two times to stop TimeShift and return to the live program.



**Note:** The record duration depends on your PC hard drive space as it uses up memory.

As well as timeshift you can also record manually record a program, this will save to your PC hardrive.

To record a program press the  record button once which will start to record the program when your program is finished press the  stop button to end your recording. Your file will now be saved as a .mpg in the folder you selected when installing the software.



As well as the timeshift and recording function you can also set up a timed recording if you leave your PC on.

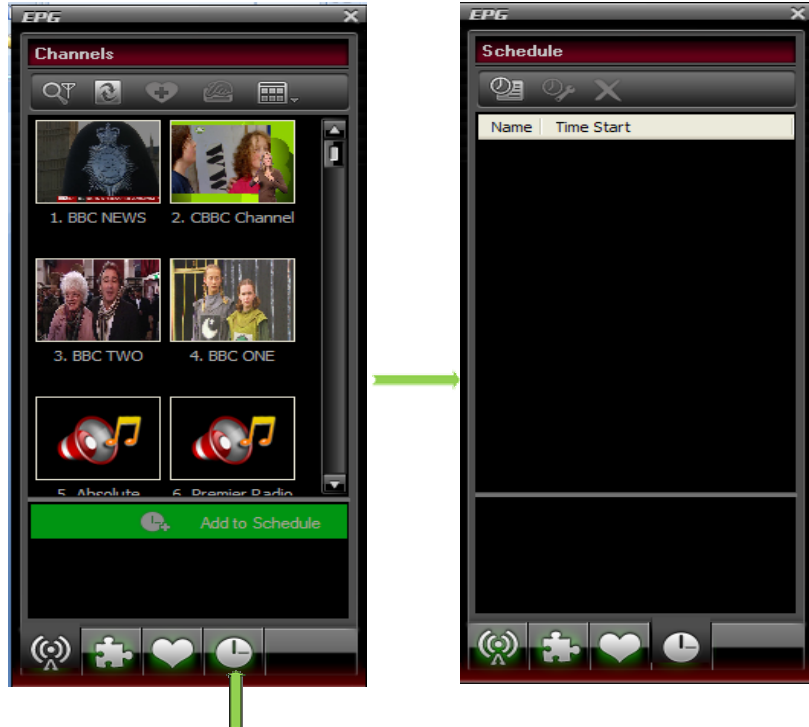
1 – On your blaze toolbar click




on the EPG button to bring up the following box. Now





click on the show schedule button

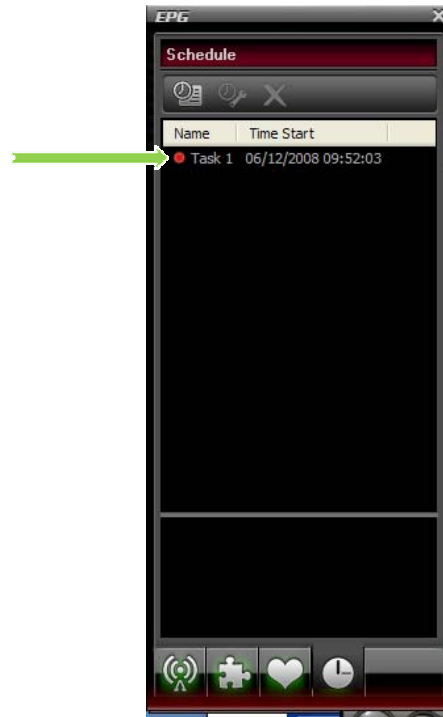





2 – Now click on the  Create task button to bring up the task manager. First name the file then select which channel you wish to pre-record. Make sure that the duration is set to cover the length of the program and also make sure that the start date and start time are set, then click OK to confirm.



3 – Once you have completed steps one and two you should now see the following box which shows your new task set up. Now you can leave your PC but you must make sure your PC is on otherwise it will not record.

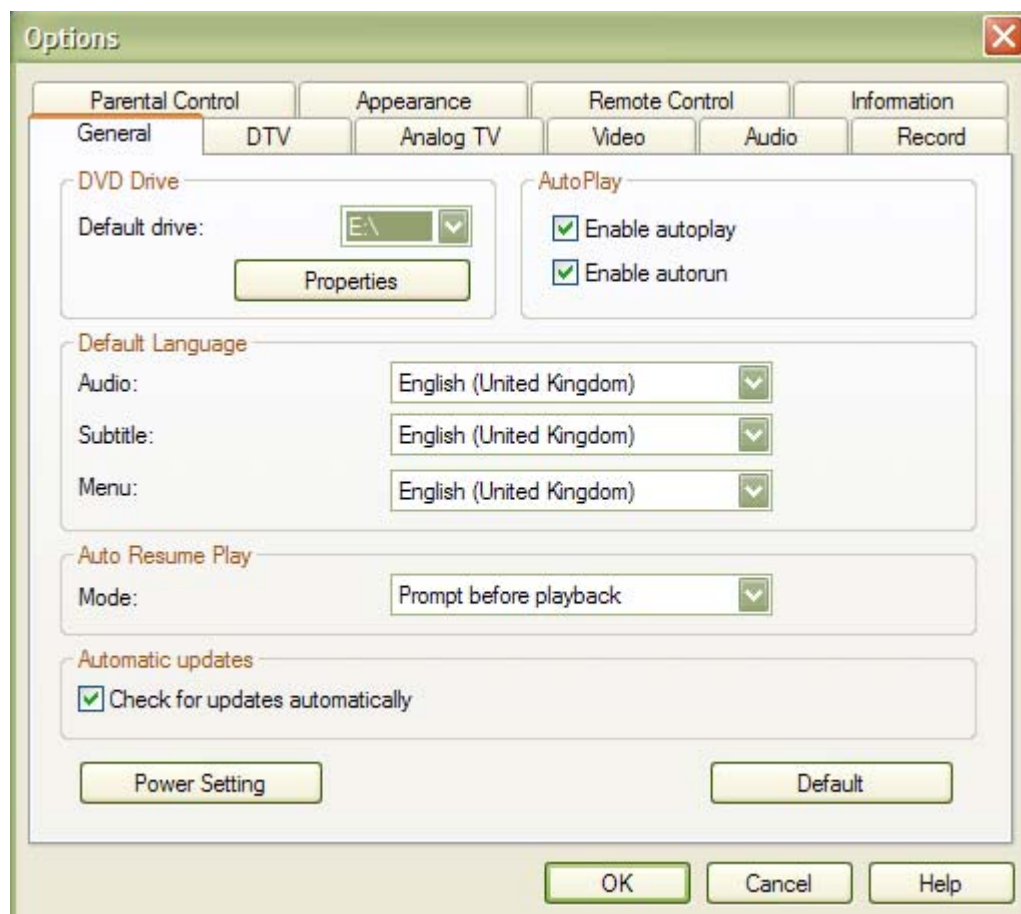
If you need to edit this recording simply click on the new task and then select  modify task button or to delete the recording select  delete button.



A lot of us have channels that we watch a little more than others, so you can add favorite channels to your set up by clicking on the  button, now click on the channel once you want to add and then click on  add favorite button to add this channel to the favorites folder and click OK to confirm. To display your favorite channels click  favorites button and double left click on your channel.

Now we have gone through the main functions for blaze lets take a look at the advanced options you can access and change.

To first access these options right click once on the main video screen of blaze then select options which will bring up the following box.



### 3 – General settings.

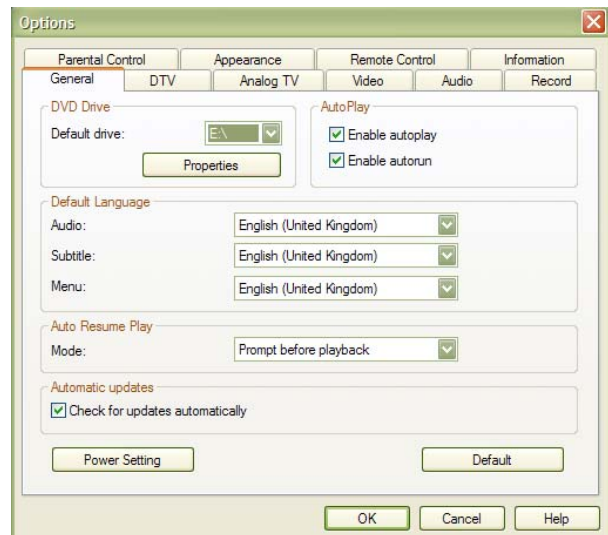
**Default drive** – Drive your PC will save all content to.

**Audio** – Change audio language (only available in your country)

**Subtitle** – Change subtitle language (if available on that channel)

**Menu** – Change menu display language.

**Mode** – Change to desired autoplay setup.



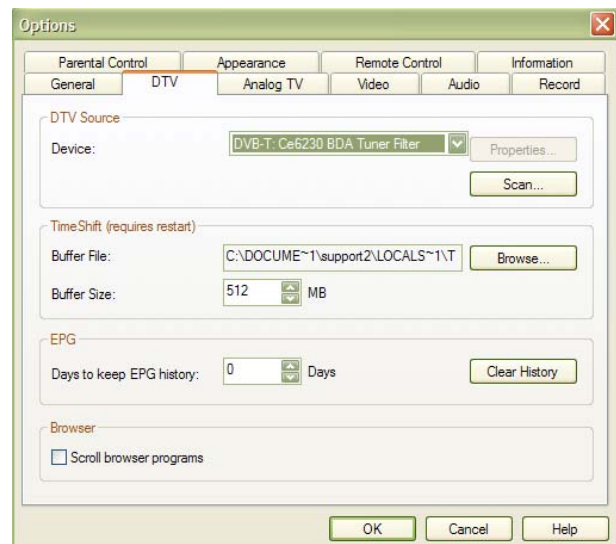
### 4 – DTV Settings.

**Device** – This is set to your USB dongle so you cannot change this option.

**Buffer file** – This is the location where your memory is used when using the timeshift function.

**Buffer Size** – This is the maximum amount of memory you allow the timeshift to use up, adjust accordingly.

**EPG** – This is the amount of days your PC will keep the history of all stored EPG settings, adjust accordingly.

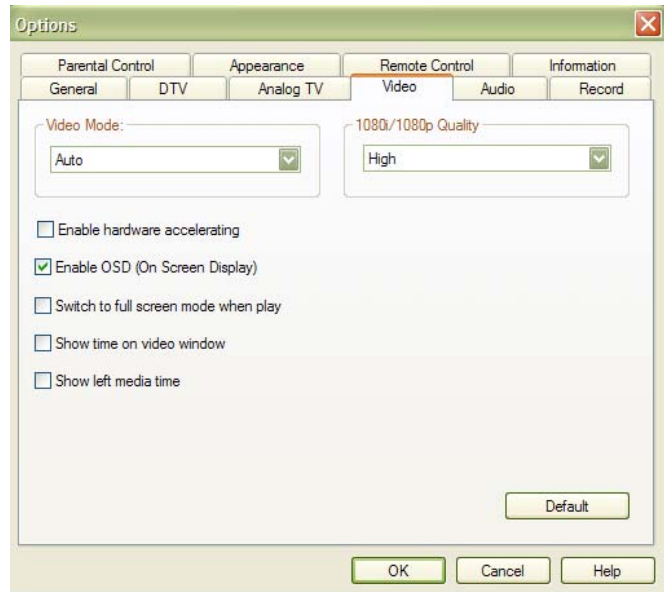


## 4 – Video Settings

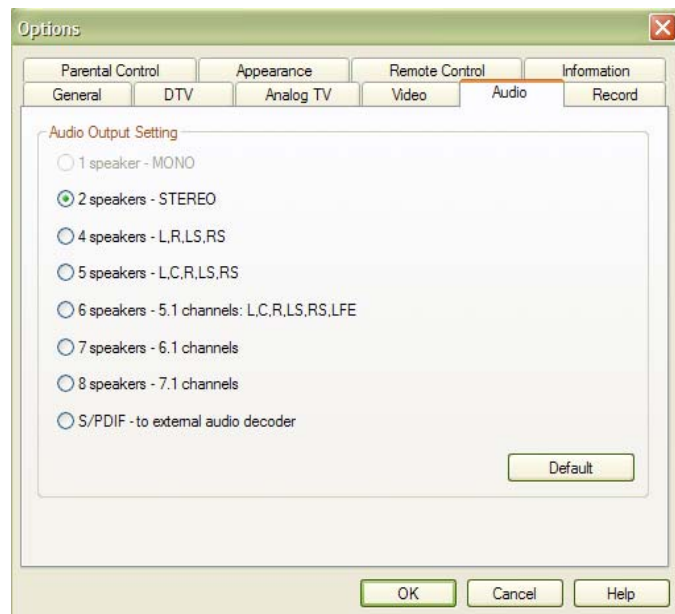
**Video mode** – It is recommended to always have this set to auto.

**Quality** – Depending on your PC performance you can adjust the quality of the display.

You also have tick options listed, tick or uncheck each option you require.



5 – This is the audio set up section and gives you a list of output settings, it will normally default to your PC's current set up. Adjust accordingly.



**Parental control** – Allows you to change the current age limit with the player.

The left over tabs available in options are set to the default and cannot be changed.

- Q.** When I open Blaze it keeps coming up with an error and won't open.
- A.** Try uninstalling and reinstalling both the software and drivers, also make sure your PC is running on a USB 2.0 port as if its any earlier than this then it will not work.
- Q.** When Im watching a TV program it keeps freezing and going quiet, why is this?
- A.** This is simply a freeview signal drop where the digital signal your aerial is receiving has weakened temporarily. This can also be down to the strength of your aerial.
- Q.** When I try to record it keeps saying I don't have enough space.
- A.** Make sure that you have enough space allocated in the DTV settings (section 4, page 19) for buffer size as if you have reached the maximum amount it wont store anymore memory.

	Basic
CPU	Intel Celeron 600MHz or higher
System Memory	128MB RAM or higher
Operating System	Windows 98 SE/ME/ 2000/ XP/ Vista
Display Card	24 Bit resolution and supports DirectX 9.0, 8MB Video-ROM or more
Sound Card	PCI sound cards, Integration chipset on Mother Board, USB audio devices etc. compatible with Windows and stereo speakers
Device	All DVD drives; HDTV receiver and its driver should be properly installed for HDTV playback
Hard-disk Available Capacity	At least 512 MB temporary space for TimeShifting; Large enough space for HDTV/DVD record

TECHNICAL SUPPORT LINE

GENERAL SUPPORT CAN BE PROVIDED ON ALL  
PRODUCTS PURCHASED FROM US

(Unfortunately we cannot provide support on products or components that we do not supply)

0161 975 0458

Calls cost National Rate, Unless dialing from 0161 area

CALLERS MUST BE MINIMUM OF 18 YEARS OF AGE

CALLERS MUST HAVE THE PERMISSION OF THE TELEPHONE SUBSCRIBER

ALL INFORMATION GIVEN IS CORRECT

AT THE DATE OF PUBLICATION - 05/12/2008

HOURS OF BUSINESS

MON – FRI 9am to 5pm (excludes bank holidays)

FASCIN8 LTD

14 EMBANKMENT BUSINESS PARK

VALE ROAD, HEATON MERSEY

STOCKPORT CHESHIRE, SK4 3GN

Alternatively visit our website for further support

[www.fascin8.co.uk](http://www.fascin8.co.uk)

## Fault Report Card

---

Name \_\_\_\_\_

Address \_\_\_\_\_

\_\_\_\_\_

Email \_\_\_\_\_

Daytime Tel No \_\_\_\_\_

Model Number (on the front page of the manual) \_\_\_\_\_

Fault Description \_\_\_\_\_

\_\_\_\_\_

\_\_\_\_\_

SERVICE HELPLINE  
UK / N.IRELAND 0161 975 0458  
REP IRELAND 1800 882912  
WEB: [www.fascin8.co.uk](http://www.fascin8.co.uk)

FASCIN8 LTD  
14 EMBANKMENT BUSINESS PARK  
VALE ROAD, HEATON MERSEY  
STOCKPORT SK4 3GN

Filename: USB 2  
Directory: C:\Documents and Settings\support2\My Documents  
Template: C:\Documents and Settings\Moosa\Local Settings\Temporary Internet  
Files\OLK1B3\DM077699.dot  
Title:  
Subject:  
Author: MoZarD  
Keywords:  
Comments:  
Creation Date: 12/10/2008 11:50:00 AM  
Change Number: 2  
Last Saved On: 2/5/2009 9:34:00 AM  
Last Saved By:  
Total Editing Time: 2 Minutes  
Last Printed On: 2/5/2009 9:35:00 AM  
As of Last Complete Printing  
Number of Pages: 24  
Number of Words: 1,760 (approx.)  
Number of Characters: 10,033 (approx.)