



PC Web Camera

INSTRUCTION MANUAL

AFTER SALES SUPPORT

HELPIE NO 0161 975 0458

WEB SUPPORT www.ikasu.tv

MODEL NUMBER: DM090434

Contents

- 2 – General Information and safety instructions
- 3 – Accessories
- 4 -Features
- 5 – Webcam display
- 6 – Webcam software and webcam setup
- 10 –IM Compatibility
- 11 – Technical support

Helpline No. 0161 975 0458

Web Support www.ikasu.tv

Model Number: DM090434

I

General information and safety instructions

- Never attempt to manually fix the product. Opening the unit will void your guarantee.
- If cleaning the lens, use a soft, dry cloth.
- Do not expose the product to direct sunlight for long periods of time.
- Do not expose the product to damp or moist conditions.
- Do not point the lens directly into the sun.



Do not dispose of this product in your household waste. Contact your local authority for details of local recycling schemes

Helpline No. 0161 975 0458

Web Support www.ikasutv.com

Model Number: DM090434

Accessories

- Software CD
- User Manual
- Quick ref guide

Helpline No. 0161 975 0458

Web Support www.ikasu.tv

Model Number: DM090434

Features

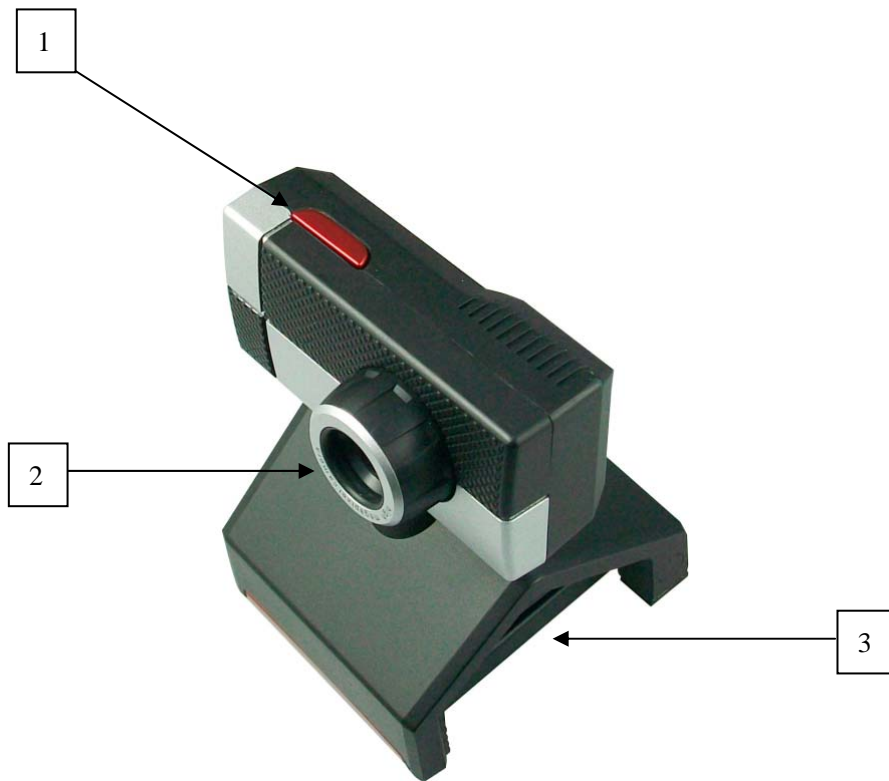
- CMOS VGA Sensor, video resolution 4.0M pixels, 12.0M static pixels.
- Plug & Play for Windows Xp/SP2 and Windows Vista.
- USB 2.0 high speed interface
- Easy-touch snapshot for photo capture.
- Up to 30fps for VGA(640*480);
- Video data format: 8/16/24 bits, CCIR601, CCIR656
- Auto-white balance, Auto-exposure
- with digital zoom and multi-background Frame
- Record and Store Digital Videos in AVI and WMV file Formats.
- VFW interface: captures both video and still images
- Automatic exposure control / automatic gain control / automatic white balance control.

Helpline No. 0161 975 0458

Web Support www.ikasutv.com

Model Number: DM090434

Webcam Display



1 – Quick snap button – used to take a quick photo.

Your quick snap photo's will be stored to the directory you have selected in the file>set snapshot file folder (page 6)

2 – Focus wheel – Turn to focus the image.

3 – Stand – use for placing on top of a monitor or placing on a flat surface.

Helpline No. 0161 975 0458

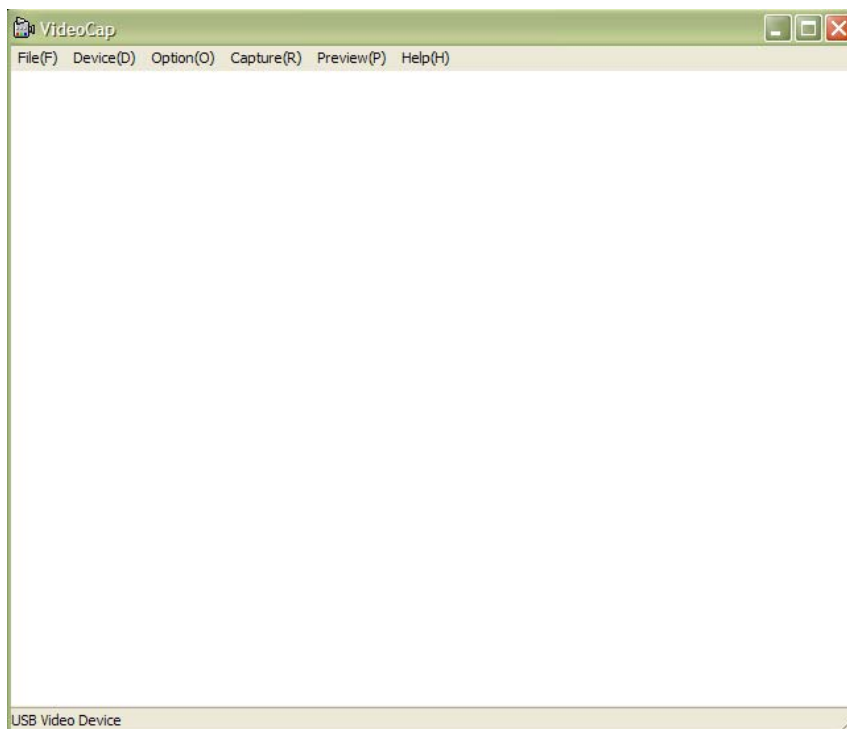
Web Support www.ikasu.tv

Model Number: DM090434

Installing the software and webcam setup

In order to install the software simply place the CD into your disk drive and it will auto execute the videocap software install. Follow the install instructions until complete. Once the install is complete you will now have the videocap software available on your desktop and program file.

Plug in your webcam which will now automatically load into your PC. Double click on the videocap software which will now bring up the webcam window.



File has three options to choose from:

- a) Set capture file folder – Select the desired folder on your PC to save the capture webcam video files.
- b) Set snapshot file folder - Select the desired folder on your PC to save the capture webcam picture files.
- c) File index reset – Resets the file numbering set up

Helpline No. 0161 975 0458

Web Support www.ikasu.tv

Model Number: DM090434

Webcam setup

Device has two options, however these are set up automatically upon install and cannot be changed.

- a) USB video device
- b) Current sound card

Option has four options to choose from

- a) Preview – toggle to show a preview screen or a black screen
- b) Video capture filter – Gives you the following options to change

Brightness – Adjusts the pictures brightness

Contrast – Adjusts the pictures contrasts

Hue – Adjusts the pictures Hue

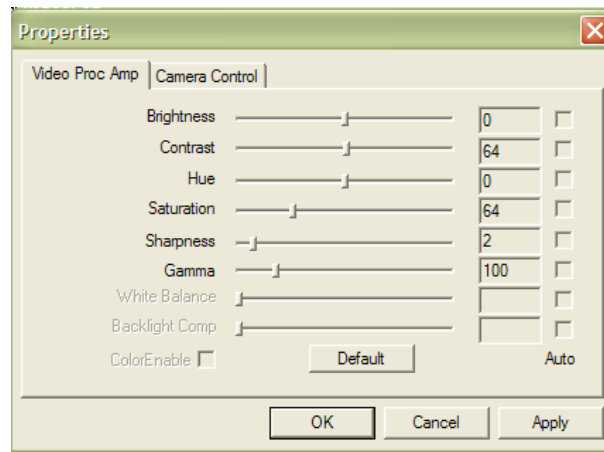
Saturation – Adjusts the pictures Saturation

Sharpness – Adjusts the pictures Sharpness

Gamma – Adjusts the pictures Gamma

Default – Resets the cameras picture layout to the factory default

Camera control – is not available on this model



Helpline No. 0161 975 0458

Web Support www.ikasv.tv

Model Number: DM090434

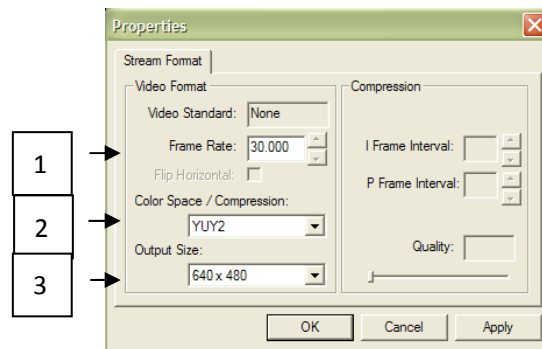
Webcam setup

c) Video capture PIN – Gives you the following options to change if highlighted.

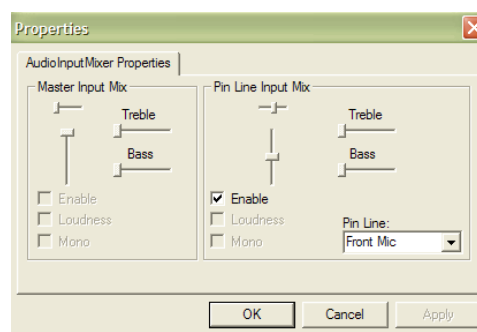
1 – Frame rate is used to set how many frames your webcam records at, this will normally be set to 30.

2 – Colour Space/Compression is the colour set up and compression available from your PC, again this cannot be altered.

3 – Output size is the webcam preview pane size displayed, you can change this from 160x120/176x144/320x240/352x258/640x480.



d) Audio Input Mixer Properties allows you to change or alter certain audio options.
Alter the selectable options to meet your audio requirements



Helpline No. 0161 975 0458

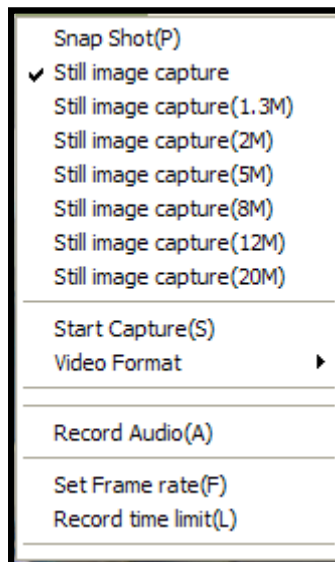
Web Support www.ikasu.tv

Model Number: DM090434

8

Webcam setup

Capture gives you the following options to select from



Snap shot – Sets the webcam into snapshot mode

Still image capture – Sets the webcam into standard still image capture

You can then up the megapixel setting from 1.3m to 20m

Start Capture – This will start to record like a video camera, select stop capture when finished

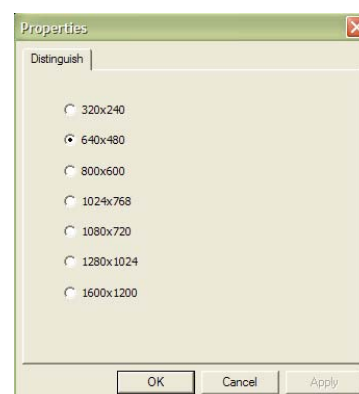
Video format – Select either AVI or WMV for the completed video format once recorded

Record Audio – You can toggle between recording audio or not while filming

Set frame rate – Alter the frame rate from 1 to 30

Record time limit – Alter time limit from 1second to however long you want to record for

Preview allows you to again set the resolution of the preview pane, select from the options as shown in the illustration.



Helpline No. 0161 975 0458

Web Support www.ikasu.tv

Model Number: DM090434

IM Compatibility

This webcam is compatible with the following IM suppliers



Yahoo Messenger - <http://uk.webmessenger.yahoo.com/>



MSN (windows Live Messenger) - <http://mail.live.com/mail/MSNWebIMDecomm.aspx>



Skype - www.Skype.com

For support on how to setup your iKasu webcam with your Instant Messaging software, please check the documentation of the software.

Helpline No. 0161 975 0458

Web Support www.ikasu.tv

Model Number: DM090434

10

Technical Support

TECHNICAL SUPPORT LINE

GENERAL SUPPORT CAN BE PROVIDED ON ALL
PRODUCTS PURCHASED FROM US

(Unfortunately we cannot provide support on products or components that we do not supply)

0161 975 0458

Calls cost National Rate, Unless dialing from 0161 area

CALLERS MUST BE MINIMUM OF 18 YEARS OF AGE
CALLERS MUST HAVE THE PERMISSION OF THE TELEPHONE SUBSCRIBER

ALL INFORMATION GIVEN IS CORRECT
AT THE DATE OF PUBLICATION - 16/09/2009

HOURS OF BUSINESS
MON – FRI 8.30am to 5.30pm (excludes bank holidays)

FASCIN8 LTD
14 EMBANKMENT BUSINESS PARK
VALE ROAD, HEATON MERSEY
STOCKPORT CHESHIRE, SK4 3GN

Alternatively visit our website for further support
www.ikasu.tv

Helpline No. 0161 975 0458

Web Support www.ikasu.tv

Model Number: DM090434

||