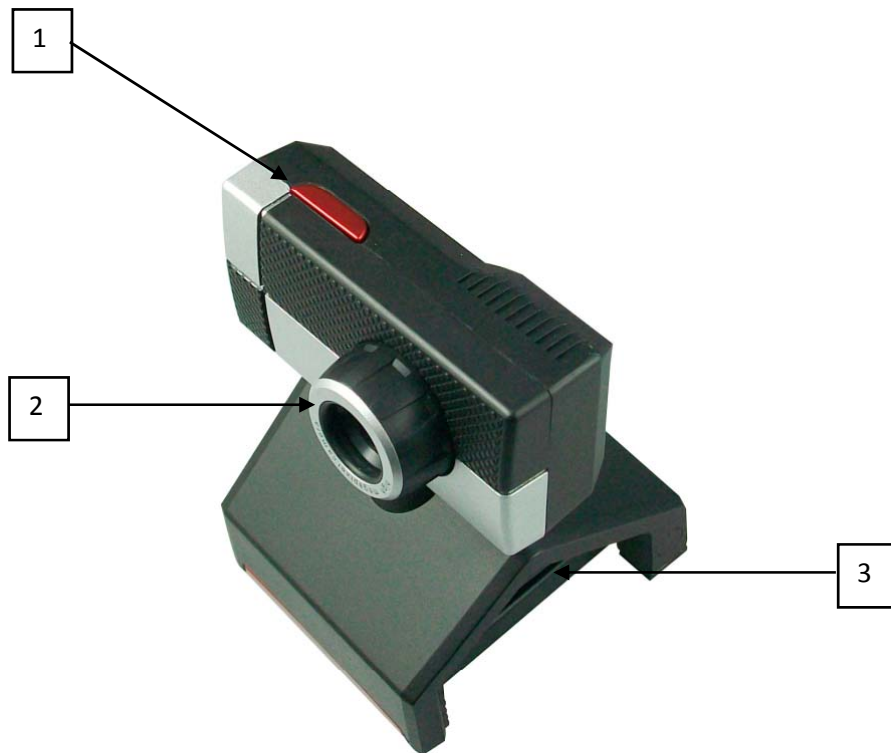




PC Web Camera

Quick Set-Up Guide

WEBCAM DISPLAY AND FUNCTIONS



1 – Quick snap button – used to take a quick photo.

Your quick snap photo's will be stored to the directory you have selected in the file>set snapshot file folder (page 6 of the user manual)

2 – Focus wheel – Turn to focus the image.

3 – Stand – use for placing on top of a monitor or placing on a flat surface.

Helpline No. 01619750458

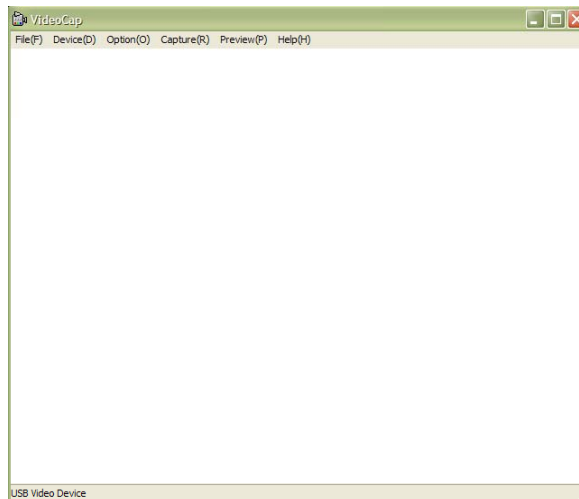
Web Support www.ikasu.tv

Model Number: DM090434

INSTALLING THE SOFTWARE AND WEBCAM SETUP

In order to install the software simply place the CD into your disk drive and it will auto execute the videocap software install. Follow the install instructions until complete. Once the install is complete you will now have the videocap software available on your desktop and program file.

Plug in your webcam to the USB port on your PC or laptop which will then automatically load into your PC. Double click on the videocap software which will now bring up the webcam window



Once the software is running, you will see the webcam image being displayed on your PC. You can use the options in the options tab such as video capture filter to adjust the picture quality or frame size (please refer to the manual for more instructions on this)

If the picture seems out of focus try adjusting the focus wheel on the front of the camera until a clear picture is displayed. Also be aware that if the room is too dark your cam may not show a picture.

For more detailed instructions, please refer to the User Manual.