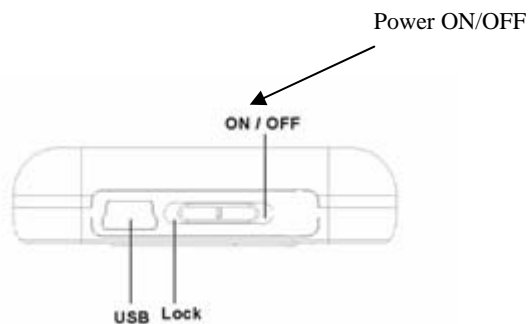


# IKASU™ 8GB MP4 Touch Screen

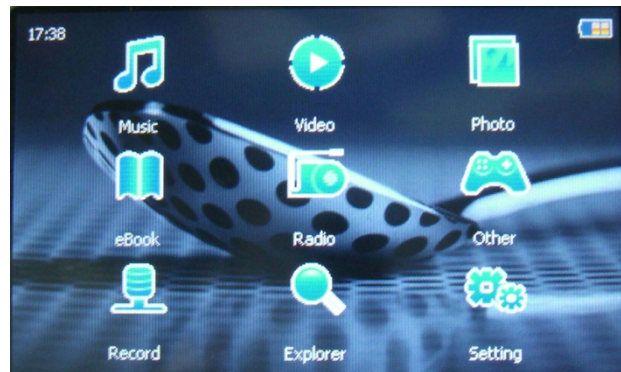
## Quick Set-Up Guide

### SWITCHING ON YOUR MP4 PLAYER

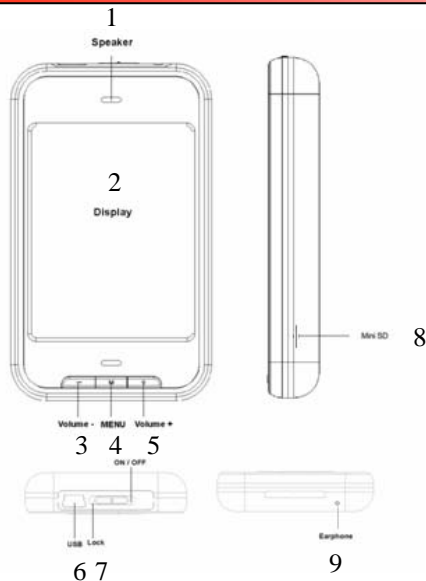
On the side of the MP4 player there is a power button, simply slide the button to the right and hold for 3 seconds, repeat the process to switch off the player. Please note that you must charge the MP4 player for at least 6 hours before any usage. See below on how to charge



Once you have placed your files onto your MP4 player simply select the desired mode in which you wish to view by gently pressing the desired function on your touch screen. And then press the play button to begin listening. See below on how to put music files on to the player



### MP4 FUNCTIONS AND CHARGING



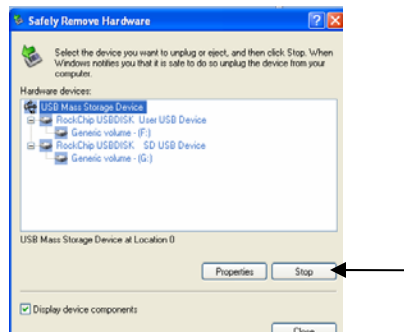
- 1 –Speaker
- 2 –Display
- 3 – Volume minus
- 4 – Menu
- 5 – Volume +
- 6 – USB Connection
- 7 – Lock on/off
- 8 – Memory Slot
- 9 – Earphone slot

### Charging your player

When the MP4 player is plugged into the PC the MP4 screen will display USB and PC, this indicates that your player has established a connection with the PC and is ready for file transfers.

To Charge the MP4 player via USB follow these simple steps

1. When the Player is connected on the lower right of your PC screen in the task bar a "Safely remove hardware" icon will appear
2. Right click on this image and left click on "Safely remove hardware"
3. You will now see the MP4 USB listed as shown below. Simply highlight this USB device and click on the STOP button, another prompt will appear to confirm removal, press OK to confirm. You will now see on the player a animation of a battery charging. If you want to file transfer again then simply unplug your MP4 and plug it back in.



## USB Connection

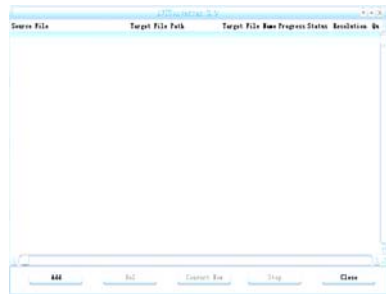
Some of the problems that can occur is that your PC will not recognize the player, make sure that your USB is firmly connected in both ends. Also try some of your other PC's USB ports as these can become damaged as well as the wire connector

## CONVERTING MOVIES AND MUSIC TO YOUR MP4 PLAYER

### Video Playback

Before you begin using the Movie transformer you must install the program, please follow the install instructions in the user manual

1 - Click and run the program of "AV Converter.exe", shown as follows:



2 - click "add", show dialog as follows



3 - Select and set your desired parameters, select your desired video/audio file and AVI video file routine to be generated, click [Start to Convert] button, then begin to convert to AVI file.



4 - The successfully converted AVI video file can be played in the MP4 player. During the operation enter Video Play menu, select the corresponding file and long press to start playing the movie

### Music Playback

In order to place music on your MP4 player simply copy and paste your MP3's into the removable device which should appear when you plug your MP4 player in, then unplug your MP4 player from the PC. If you are trying to get music from a CD onto your MP3 player then simply put your music CD into your PC and open up windows media player (if you do not have this then you can download the software from the microsoft website) using the RIP facility, RIP the songs from your CD to the MP4 player. If you are unsure on How to do this either use the windows media help or alternatively go to [www.ikasu.tv](http://www.ikasu.tv) and watch the video tutorial which will give you step by step instructions.

Once you have placed music into your MP4 player simply switch the player and enter the music Function, your songs should now be there to play, select the song and press the play button to begin.