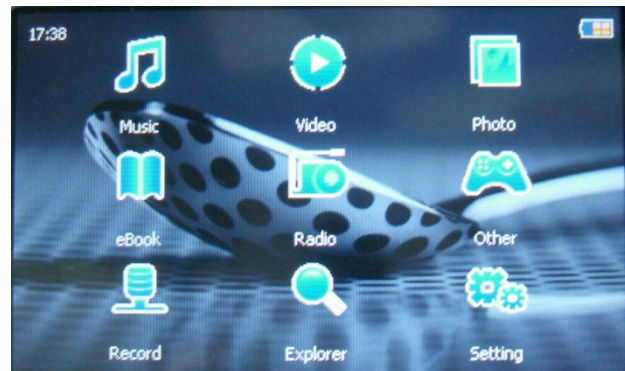
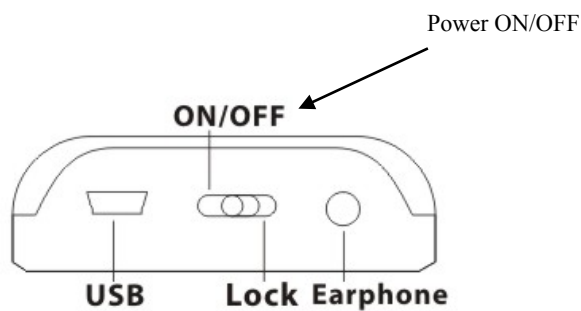


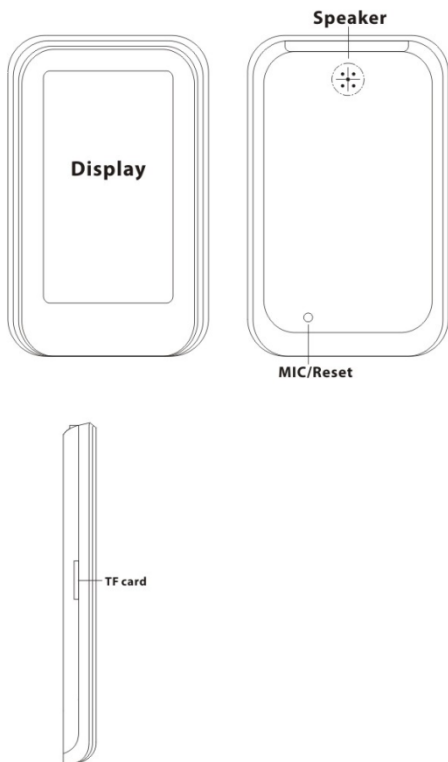
SWITCHING ON YOUR MP4 PLAYER

On the side of the player there is a power button, simply slide the button to the right and hold for 3 seconds, repeat the process to switch off the player. Please note that you must charge the player for at least 6 hours before any usage. See below on how to charge

Once you have placed your files onto your player simply select the desired mode in which you wish to view by gently pressing the desired function on your touch screen. And then press the play button to begin listening. See below on how to put music files on to the player



MP4 FUNCTIONS AND CHARGING



CHARGING VIA USB

When the player is plugged into the PC the screen will display USB and PC, this indicates that your player has established a connection with the PC and is ready for file transfers.

To Charge the player via USB follow these simple steps

1. When the Player is connected on the lower right of your PC screen in the task bar a "Safely remove hardware" icon will appear
2. Right click on this image and left click on "Safely remove hardware"
3. You will now see the USB listed as shown below. Simply highlight this USB device and click on the STOP button, another prompt will appear to confirm removal, press OK to confirm. You will now see on the player a animation of a battery charging. If you want to file transfer again then simply unplug your player and plug it back in.



USB CONNECTION

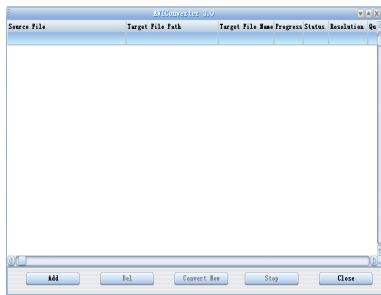
Some of the problems that can occur is that your PC will not recognize the player, make sure that your USB is firmly connected in both ends. Also try some of your other PC's USB ports as these can become damaged as well as the wire connector

CONVERTING MOVIES AND MUSIC TO YOUR MP4 PLAYER

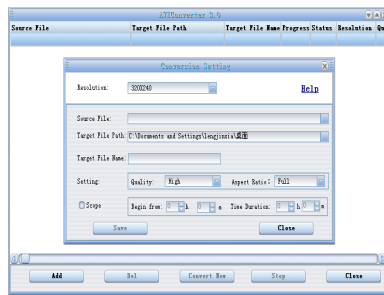
Video Playback

Before you begin using the Movie transformer you must install the program, please follow the install instructions in the user manual

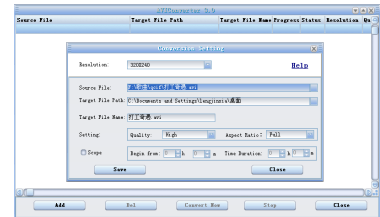
1 - Click and run the program of "AV Converter.exe", shown as follows:



2 - click "add ", show dialog as follows



3 - Select and set your desired parameters, select your desired video/audio file and AVI video file routine to be generated, click [Start to Convert] button, then begin to convert to AVI file.



4 - The successfully converted AVI video file can now be played on the player. During the operation enter Video Play menu, select the corresponding file and long press to start playing the movie

Music Playback

In order to place music on your player simply copy and paste your MP3's into the removable device which should appear when you plug your player in, then unplug your player from the PC. If you are trying to get music from a CD onto your MP3 player then simply put your music CD into your PC and open up windows Media player (if you do not have this then you can download the software from the microsoft website) using the RIP facility, RIP the songs from your CD to the Media player. If you are unsure on how to do this either use the windows media help or alternatively go to www.fascin8.co.uk and watch the video tutorial which will give you step by step instructions, or read the more in depth instructions in the manual

Once you have placed music into your player simply switch the player and enter the music Function, your songs should now be there to play, select the song and press the play button to begin.