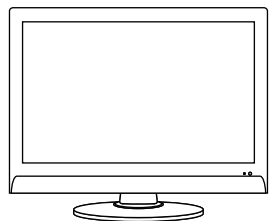


Quick Start Guide

Model: DV074607



What's in the box?



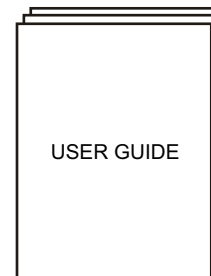
TV Unit



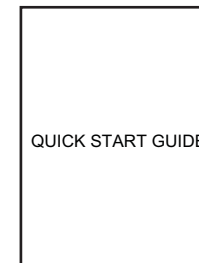
Remote control



Power Cord



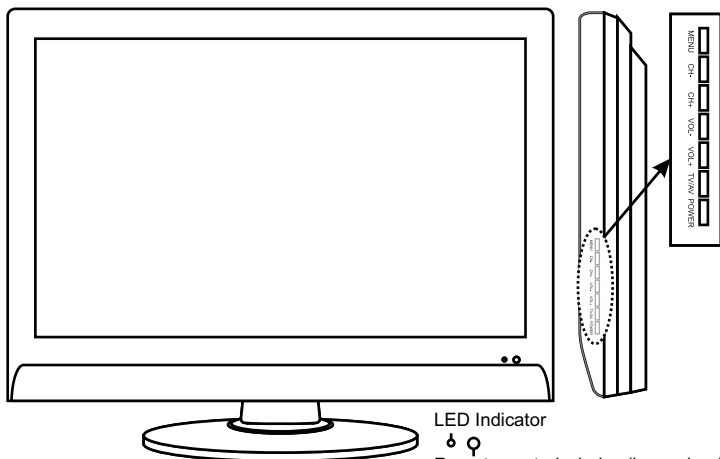
USER GUIDE



QUICK START GUIDE

1

TV LAY OUT

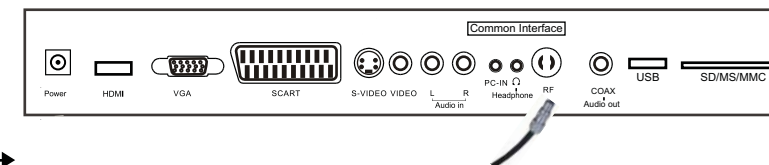


LED Indicator
Remote control window(keep clear)

2

Attach your domestic antenna

Connect your domestic antenna into the **RF/IN** socket on the left profile of the TV as shown.

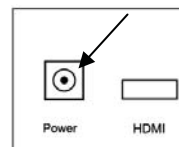


3

Power-up and turn on your TV

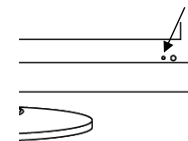
1

Connecting to the power with the power cable.



2

The standby indicator on the front of the TV will light up in blue.



3

Insert 2xAA batteries (provided) into your Remote control



Take care to ensure the correct polarity when fitting the batteries.

4

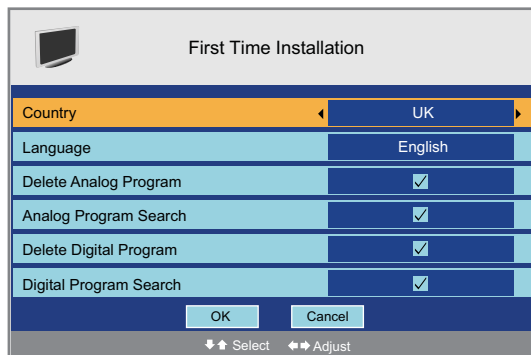
Press POWER button on TV set on the remote control to turn on your TV.

Technical support: 0161 975 0458 – Monday to Friday 9am to 5pm

First time installation Freeview

First Time Installation

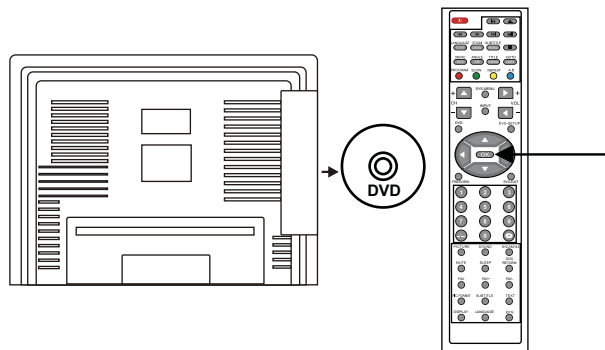
You can select "Country" and "Language"(OSD display language), When you have selected, press \uparrow \downarrow buttons to select "OK", and press OK button to start auto search. The TV will start searching from the lowest frequency(You can press SYS-MENU to cancel the auto search).



Playing a DVD

First make sure that you are in DVD mode (press INPUT button to display the source menu and \uparrow \downarrow button to select DVD source, press \Rightarrow button to enter). Now place the disc into the slot at the back of the TV, make sure that the mirror side is facing towards you.

Once your disc is in, it will automatically load the Main Menu. Use the remote control to select the program, and press OK button to play.



Signal strength issues

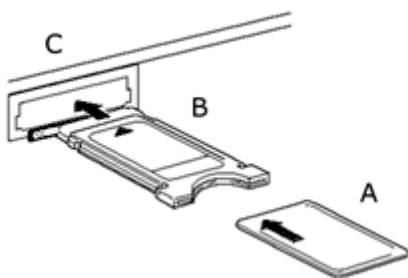
If you are receiving a message "Warning: No Signal" on your TV, this is because the signal strength and quality are not high enough. Try experimenting with different antenna positions to get the best signal.

If you cannot obtain a satisfactory signal you may be able to improve this by purchasing an antenna signal booster. Contact your electrical retailer for details.

Alternatively log onto the Freeview website www.freeview.co.uk for hints and tips on freeview signal problems

CI Slot

The CI is the slot on the base of the TV into which a Conditional Access Module (CAM) may be inserted to receive Pay TV terrestrial television like Top up TV and Setanta Sports, these are channels which are not included in the normal freeview line up (contact freeview for more information on pay channels)



Once you have inserted the CI the TV will start to read it until the stored information is displayed. You should now have the stored channels available on your freeview line up.

USB/SD Slot

You can also attach a USB or SD card in the slots located on the base of the TV.

Simply plug your USB or SD into the slot with JPEG/MP3/MP4 files on making sure you are in the DVD mode. You should then get a display on your screen as shown to the left listing all the content of your USB/SD card. Simply use the arrow buttons on your remote to move to the desired file and press OK.



If you wish to move from music/movies/pictures simply press the arrow left or right and press the OK button on the desired setting, this will then display the files under this option as shown on the right.

