

# Setting up your Ikasu – 9" DVD With Digital TV

## Quick Installation Guide



**Model Number : DV078191-DV078189**

### What's in the box?

DVD Unit



Remote Control



AV Cable



AC Adapter



Car Adapter

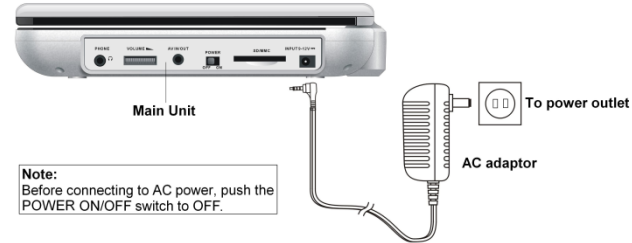


Portable Antenna



1

### Connecting your power source and charging



Connect the adaptor to the DC 12V IN jack, then set the unit in POWER ON mode for a full charge (SLOW CHARGE) or set in POWER OFF mode for a full charge. (FAST CHARGE). the indicator is red during charging and will go green when charging is completed.

The battery should last for about 2.5 hours, after this repeat the same charging as above to recharge.

2

### Remove The Protection Card

Remove the protection card inside the disc compartment before using this Player.



3

### Attach Your Domestic Antenna

1

When first setting up your TV, we recommend that you connect your domestic antenna such as the one you have in your living room for tuning in your TV channels. Connect your domestic antenna into the aerial socket on the back of your DVD player.

2

Once you have tuned in your channels you can then revert to using a portable digital aerial. If desired, **providing that your current Digital Signal is strong enough.**



4

### Playing a DVD

Simply change the mode to DVD by pressing the switch button, now move to DVD and press the enter/ok to select the DVD mode.

Place your DVD into the player pushing until the disc clicks on to the centre ring. Shut the lid and the DVD should now automatically start to load and bring up the DVD's main menu, use the remote to navigate through the DVD's menu.

5

## First Time Digital TV Setup

1

When you first power the unit you will be presented with the following screen.



2

Use the arrow buttons to select your country, language and Time zone then move to Next and press enter to continue.



3

Select yes and press enter your player will now scan for Digital channels



4

Your DVD player is now scanning for channels. And once completed will go to its first channel that is picked up.

## First Time ATV Setup

1

You can also scan in analogue if you don't have a digital signal. Simply change the mode to ATV and press setup twice this will bring up the following menu

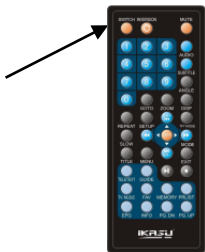


Move down to the Auto Search and then press the arrow pointing right to begin a search.

## USB/SD Operation

Simply change the mode to SD or USB by pressing the switch button, now move to either one and press the enter/ok button to select the desired mode.

The SD/USB will be read and then display the files held on the SD or USB on the screen of the player. Use the arrow buttons on the remote to move to your desired file and press enter to activate the file.



To switch between ATV,DVD, Digital, USB and SD mode press the switch button on the top left of the remote control or on the base unit then using the arrow buttons move to the desired mode and press the enter/ok button.

### Signal Strength Issues

If you are receiving a message "warning no signal" this is because the signal strength and quality is not strong enough. Try experimenting with different antenna positions to get the best signal

If you cannot obtain satisfactory signal you may be able to improve this by purchasing an antenna signal booster or a more powerful portable aerial which you can obtain at your local electrical retailer