

IKASU™

PORTABLE DVD PLAYER



INSTRUCTION MANUAL

AFTER SALES SUPPORT

HELPLINE NO 0161 975 0458

WEB SUPPORT www.ikasu.tv

MODEL NUMBER: DV090092

Contents

- 2. General information and safety instructions
- 4. Accessories
- 5. Getting started
- 6. Remote control display
- 7. Opening the screen and powering up
- 8. DVB Setup and menu options
- 10. DVD Setup and menu options
- 12. Radio Setup and menu options
- 12. MP3/MPEG4 CD playback
- 13. Picture CD playback
- 13. USB/SD/MMC Card Input
- 13. Audio IN/Headphone/Microphone
- 14. Connecting to an external TV screen
- 15. Trouble Shooting
- 16. Technical Support




Helpline No. 0161 975 0458

Web Support www.ikasu.tv

Model Number: DV090092

General information and safety instructions

WARNING

 <p>The lightning flash with arrowhead symbol, with an equilateral triangle is intended to alert the user to the presence of uninsulated dangerous voltage within the products enclosure that may be of sufficient magnitude to constitute a risk of electric shock to persons.</p>	<p style="text-align: center;">CAUTION</p> <p style="text-align: center;">RISK OF ELECTRIC SHOCK DO NOT OPEN</p> <p>CAUTION: TO REDUCE THE RISK OF ELECTRIC SHOCK, DO NOT REMOVE COVER (OR BACK). NO USER SERVICEABLE PARTS INSIDE. REFER SERVICING TO QUALIFIED SERVICE PERSONNEL.</p>	 <p>The exclamation point within an equilateral triangle is intended to alert the user to the presence of important operating and maintenance (servicing) instruction in the literature accompanying the appliance.</p>
<p style="text-align: center;">LASER SAFETY</p> <p>This unit uses a laser. Only a qualified service person should remove the cover or attempt to service this device to avoid possible eye injury. Caution: USE OF CONTROLS OR ADJUSTMENT OF PERFORMANCE OF PROCEDURE OTHER THAN SPECIFIED HEREIN MAY RESULT IN HAZARDOUS RADIATION EXPOSURE.</p>	<p style="text-align: center;">DANGER:</p>  <p>INVISIBLE LASER RADIATION WHEN OPEN AND INTERLOCK FAILED OR DEFEATED. AVOID DIRECT EXPOSURE TO LASER BEAM.</p>	

Helpline No. 0161 975 0458

Web Support www.ikasv.tv

Model Number: DV090092

General information and safety instructions

Please read through the following safety guidelines before use.

- **Ventilation**- Slots and openings in the case are provided for ventilation to ensure reliable operation of the video product and to protect it from overheating. These openings must not be blocked or covered.
- **Water and Moisture**- do not use this product near water for example, near a bath tub, wash bowl, kitchen sink or laundry tub, in a wet basement, or near a swimming pool etc.
- **Cleaning**- Unplug this product from the wall outlet before cleaning. Do not use liquid cleaners or aerosol cleaners. Use a damp cloth for cleaning.
- **Lightning**-For added protection for this product during a lightning storm, or when it is left unattended and unused for long periods of time, unplug it from the wall outlet and disconnect the antenna or cable system. This will prevent damage to the video product due to lightning and power line surges.
- **Servicing**-Do not attempt to service this product yourself, as opening or removing covers may expose you to dangerous voltage or other hazards. Refer all servicing to qualified service personnel.

Battery Handling and Usage

- Never throw batteries into a fire or expose to heat sources.
- If battery is swallowed, please seek immediate medical attention



Do not dispose of this product in your household waste. Contact your local authority for details of local recycling schemes



Batteries should not be disposed of in household waste. Batteries should be taken to appropriate disposal points or alternatively contact your local authority for details on disposal schemes

Helpline No. 0161 975 0458

Web Support www.ikasu.tv

Model Number: DV090092

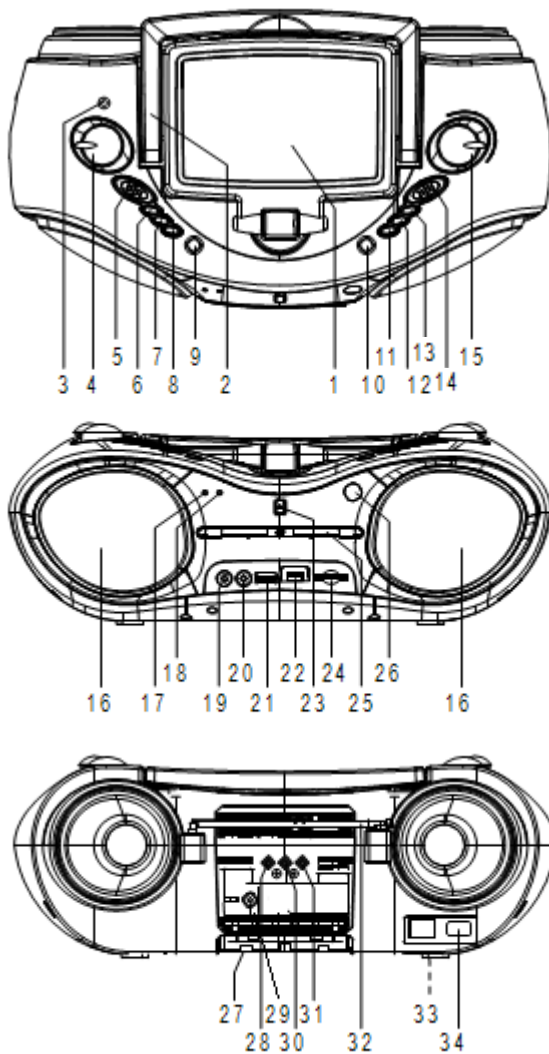
3

Accessories

- AV Cable
- User Manual
- Remote Control
- Portable Aerial

Getting Started

Front and rear display



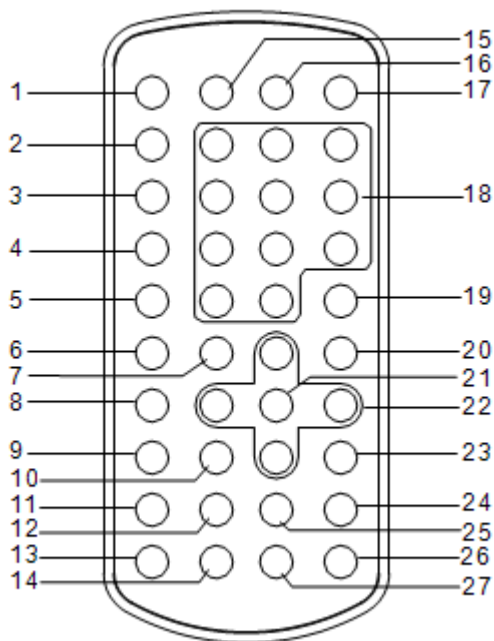
1. TFT DISPLAY
2. HANDLE
3. PHONES JACK
4. VOLUME CONTROL
5. FUNCTION SWITCH
6. ENTER BUTTON
7. CH+/UP BUTTON
8. CH-/DOWN BUTTON
9. DVD/DVB-T BUTTON
10. STOP&DVD/USB/SD BUTTON
11. PREVIOUS&F.BWD BUTTON
12. NEXT&F.FWD BUTTON
13. PLAY/PAUSE BUTTON
14. BAND SWITCH
15. TUNING CONTROL
16. SPEAKERS
17. POWER INDICATOR
18. FM STEREO INDICATOR
19. AUDIO IN JACK
20. MIC JACK
21. MIC LEVEL CONTROL
22. USB PORT
23. CD DOOR OPEN/CLOSE BUTTON
24. SD/MMC CARD SLOT
25. DISC TRAY
26. REMOTE SENSOR
27. BATTERY COMPARTMENT
28. AUDIO RIGHT JACK
29. TV ANTENNA
30. AUDIO LEFT JACK
31. VIDEO JACK
32. TELESCOPIC FM ANTENNA
33. VOLTAGE SELECTOR (OPTIONAL)
34. AC SOCKET

Helpline No. 0161 975 0458

Web Support www.ikasv.tv

Model Number: DV090092

Remote Control



1. TFT OFF/ON button
2. P/N button
3. PROGRAM/EPG button
4. REPEAT button
5. MENU button
6. SUBTITLE button
7. PLAY button
8. TITLE button
9. AUDIO button
10. PAUSE/STEP button
11. ANGLE button
12. ZOOM button
13. DVD/DVB-T button
14. TV/RADIO button
15. DISPLAY button
16. SETUP button
17. DISC TRAY OPEN/CLOSE button
18. NUMERIC buttons
19. CLEAR button
20. STOP&DVD/USB/SD CARD button
21. OK button
22. NAVIGATION buttons
23. SLOW button
24. NEXT&F.FWD button
25. PREV.&F.BWD button
26. SEARCH button
27. TEXT button

Helpline No. 0161 975 0458

Web Support www.ikasutv.com

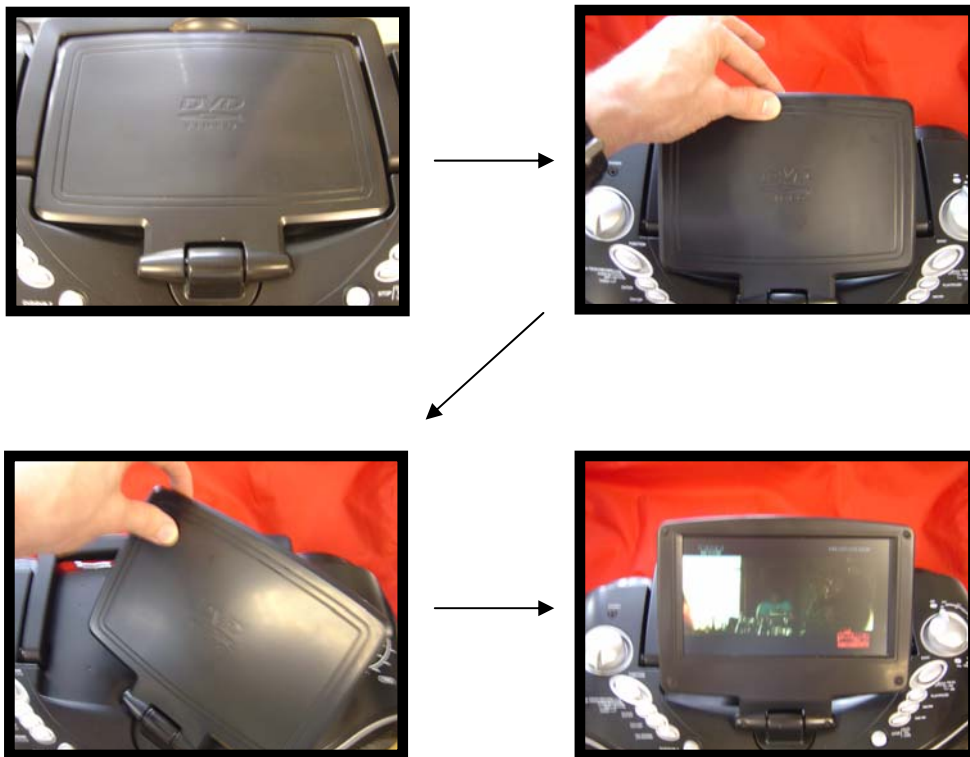
Model Number: DV090092

Opening the screen and powering up

In order to power up the unit first attach the power lead supplied to both the "AC in" on the back of the boombox and then to your mains plug on your wall.

Now flick the function button from OFF to the desired mode.

If you are using either the DVD or DVB function then you will need to erect the screen. Simply pull the screen towards you and up then swivel around to a comfortable position as shown below. DO NOT overturn the screen as you can break the pivot mantle.



Helpline No. 0161 975 0458

Web Support www.ikasu.tv

Model Number: DV090092

DVB - Setup and menu options

GETTING STARTED

NOTE :Before you attempt to scan for channels we recommend that you use a main house aerial to pick up the strongest possible signal. Once you have done this you can try using your portable aerial provided.

- 1 - Power on the player and slide the FUNCTION switch on the main unit to DVB-T/DVD/USB/CARD position, then press DVB/DVD button to select DVB play mode.
- 2 - A dialogue of first time installation shows on the screen, select the YES option to perform the first time installation, then select the options as mentioned in the dialogue to finish the first time installation or select NO to exit this interface at any time.

LANGUAGE

Press AUDIO button on the remote repeatedly to select preferred audio language by TV programs provided during DVB mode. You will only be able to select languages available on the current DVB signal.

DISPLAY PROGRAM DETAIL INFORMATION

Press DISPLAY button during DVB play mode to show the program detail information.

ELECTRONIC PROGRAM GUIDE

Press Program/EPG Button during DVB play mode to skim over TV Programs guide.

CHANGING CHANNELS

Press CH+/UP or CH-/DOWN button on the main unit or NAVIGATION UP/DOWN button on the remote to change the channel number. A desired channel can be reached using these two keys. Once the desired channel is selected, it will start broadcasting the selected channel immediately. During DVB play mode, press TV/RADIO on the remote to switch to RADIO play mode.

DVB SETUP OPTIONS

To access the DVB setup press the SETUP button located at the top of the remote control, you will then be given the following options.

1. Channel Guide

TV channels – Used to sort channels into a specific order.

Sort A-Z – Sorts channels into alphabetical order from A to Z

Sort Z-A - Sorts channels into alphabetical order from Z to A

Radio channels- Used to sort channels into a specific order

Sort A-Z – Sorts channels into alphabetical order from A to Z

Sort Z-A - Sorts channels into alphabetical order from Z to A

Channels class – Used to categorize channels

Use the arrows to move across to the Favourite tab and press the ok button to select this channel as a favourite. It will then be marked with a V. To search through your favourite channels press the left or right arrow on your remote.

Channels edit - Select this option to move or delete the channels currently scanned in.

Use the arrows to move to the MOVE or DELETE box and press the OK button to select, if DELETE is selected the box will be marked with an X and when you exit the menu the channel will be deleted. If MOVE is selected the box will be marked with a V, now move to where you want the channel to be and press OK again.

If you wish to edit the radio channels in the same way then first press the TV/Radio button on the remote and repeat the same as above.

Helpline No. 0161 975 0458

Web Support www.ikasutv.com

Model Number: DV090092

DVB - Setup and menu options

2. System configuration

TV setting

TV system: Used to select the TV system between: NTSC, PAL, AUTO

TV type: Used to select the TV scan mode.

Options: 4:3PS : Normal Pan & scan mode
4:3LB : Normal Letter box mode
16:9 : 16:9 wide screen mode

Video setting

BRIGHTNESS - set the brightness for the display.

CONTRAST - set the contrast effect for display.

HUE - set the colour impression for display.

SATURATION - set the saturation level for display.

Language Press the left or right arrow to select the on screen display language.

Parent Control

Change pin- used to change the password. Input user's password "0000" to unlock.

- 1) Enter old password in the OLD PASSWORD row
- 2) Enter new password in the NEW PASSWORD row
- 3) Enter the new password again in the CONFIRM row

Channel Lock

In order to lock certain channels first enter the channel lock option and enter the 4 digit password (default 0000) and press OK. Now simply press OK on the channels you want to lock, they will then be marked with a V. Once you exit the menu these channels become locked and require your password to enable to view them. To take the lock off simply enter the option again and press OK on the already locked channels.

Time setting

Time zone- used to select local time zone.

Sleep- used to select sleep time from (OFF, 10, 20, 30, 40, 50, 60,90 ,120min) which will switch your unit off after this set time.

System info

Select this option, the system info shows on the screen such as: Update date, Tuner info, F/M version Model version etc. Press SETUP button to exit.

Remark: In press setup button to return previous setup menu.

3. Installation

Auto Scan-select a country from <select area> row, then enter <start scan> row.

Manual scan- scroll to manual scan option and press OK. Select the area/scan type/start channel and then move to start scan and press enter.

Default setup-select this option to restore the factory default.

Helpline No. 0161 975 0458

Web Support www.ikasu.tv

Model Number: DVO90092

DVD - Setup and menu options

Playing a DVD

1. Turn on the player and slide the FUNCTION switch to the DVB-T/DVD/USB/CARD position. You may need to press the DVD/DVB-T button as well to toggle from DVB to DVD.
2. Open the disc tray by pressing the OPEN/CLOSE button either on the remote control or the main unit.
3. Place a disc onto the disc tray.
4. Close the disc tray and the playback starts automatically.
5. When a menu screen appears on the screen use the navigation arrows on the remote and the OK button to select an option.

Adjusting the volume

Adjust the volume by rotating the volume knob located at the top of the boombox.

Skipping chapters

Press NEXT SKIP or PREV SKIP button once during play to skip a chapter (DVD) or a track (CD) ahead or backwards.

Rapid ADVance/Rewind

During playback, press and hold the next/prev buttons to F.FWD or F.REW several times to scan the disc forward or backward at X2, X4, X8, X20 normal speed. Press PLAY button to resume normal play.

Pause/Play

Press the play/pause button on the main unit or the pause/step button on the remote to pause the playback. Press the play button on the remote or the play/pause button on the main unit to continue playback.

Stop Playback

Press the STOP button during playback to stop playback; the player activates its resume function when STOP is pressed in PLAY mode. Press the PLAY button again to resume playback at the point it stopped previously. Open the disc tray or press the STOP button one more time to clear the resume function. Press and hold STOP button to make selection between DVD/USB and CARD.

Slow-Motion

Press the SLOW button on the remote control during playback, the disc will then play at 1/2 normal speed at first, each time this button is pressed, the play speed becomes slower (down to 1/7 of the normal speed.) Press the PLAY button to resume normal play.

Repeat

Press REPEAT button during playback

Press once for chapter/title repeat

Press twice for repeat all

Press three times to create point A and again to create point B, this will repeat the play between these two points.

Press again to cancel repeat

Searching for a Preferred Scene

1. Press the SEARCH button during playback and highlight the chapter you wish (Title, Chapter, or Chapter time) by navigation buttons.
2. Input the desired number or time via the numeric buttons.
3. Press OK/ENTER button to confirm and the playback from the located scene starts.
4. To exit search menu, press SEARCH button directly.

Zoom play

Press the ZOOM key continuously to zoom into the picture and to zoom back out by 1/2, 1/3, 1/4 normal size. Scroll to view the enlarged picture using Navigation buttons.

Helpline No. 0161 975 0458

Web Support www.ikasutv.com

Model Number: DV090092

10

DVD Setup and menu options

On screen display information

When the player is in operation, press DISPLAY button continuously on the remote control, the screen will display parts of information (current disc type, title number, chapter number, playtime, audio language, audio type, subtitle language and multi angle, etc) in sequence.

Changing audio language

It is possible to change the audio soundtrack language to a different language from the one selected at the initial settings

(This operation works only with discs on which multiple audio soundtrack languages are recorded).

Press the AUDIO button during DVD disc playback, the sound track language changes with the current sound track number shown on the TV screen.

NOTE: When no soundtrack languages are recorded, pressing this button will not work.

Multi-Angle Viewing (DVD ONLY)

Press ANGLE button during playback to display the number of angles being played and then select a desired angle to view the scene.

Note: only the DVDs shot with multi-angle scenes have this function.

Changing subtitle language (DVD ONLY)

Press SUBTITLE button during playback, the subtitle language shown on the screen will change as a response to each press;

When the desired language appears, release the button to view the subtitle in that language.

Note: this function only works on DVDs recorded with multi-language.

Returning to the main menu (DVD)

During playback, press MENU button to return to main menu. Press the TITLE button to play the title.

1. SYSTEM SETUP

Press the SETUP button to enter the DVD system options.

1.1 TV system - used to select the TV mode. Options: NTSC, PAL, AUTO

1.2 Screen saver - when the DVD is not playing and not in use for several minutes, a running DVD logo will move across the TV screen to protect the TV Screen. Options: ON: screen saver is enabled OFF: screen saver is disabled.

1.3 TV type - used to select the TV scan mode, please set as per your TV set.

Options: **4:3PS** : Normal Pan & scan mode

4:3LB : Normal Letter box mode

16:9 : 16:9 wide screen mode

1.4 Password - input password to unlock the system.

1.4.1 Enter SYSTEM SETUP, select the PASSWORD item by scrolling the down with the navigation buttons, and then press the right navigation button to select the input box.

1.4.2 Input the default user password "0000" to unlock it. While unlocked you can enter a new password to use, for example 1234 then lock it again.

1.5 Rating - Set the rating of this player. If you want to change the rating of the parental lock, please input the password to unlock first and then change to the following options

Options: **1 KID SAFE / 2 G / 3 PG / 4 PG 13 / 5 PG-R / 6 R / 7 NC-17 / 8 ADULT**

1.6 Default - Reset to factory settings.

Helpline No. 0161 975 0458

Web Support www.ikasu.tv

Model Number: DV090092



DVD Setup and menu options

2. LANGUAGE SETUP

2.1 OSD LANGUAGE - used to select different On Screen Display languages select as required.

2.2 AUDIO LANG - select preferred audio language. (DVD only, need disc software support)

2.3 SUBTITLE LANG - Select preferred subtitle language. (DVD only, need disc software support)

2.4 MENU LANG - Select preferred disc menu language. (DVD only, need disc software support)

3. VIDEO SETUP

3.1 BRIGHTNESS -set the brightness for the display. Options: 0/2/4/6/8/10/12

3.2 CONTRAST - set the contrast effect for display. Options: 0/2/4/6/8/10/12

3.3 HUE - set the colour impression for display. Options: -6/-4/-2/0/+2/+4/+6

3.4 SATURATION - set the saturation level for display. Options: 0/2/4/6/8/10/12

4. SPEAKER SETUP

4.1 DOWNMIX

Options: **LT/RT** - Left/Right mix mode

STEREO - Stereo mode

Radio Setup and menu options

1. Slide the FUNCTION switch to the RADIO position, the POWER Indicator will light up.
2. Select the desired band with the BAND switch whether AM/FM/FM ST
3. Tune to the desired station by rotating the TUNING control
(Move the control back and forth until you get the strongest clearest sound).
4. The built-in AM antenna and external FM TELESCOPIC ANTENNA are directional.
 - When receiving an FM broadcast, fully extend the TELESCOPIC ANTENNA and position for the best reception.
 - For AM broadcasts, rotate the whole set until the best reception is heard.
5. Adjust the volume level to a comfortable listening level.
6. To turn off the radio, slide the FUNCTION switch to OFF position.

MP3/MPEG4 CD playback

MP3/MPEG 4 PLAYBACK

1. Load the MP3/MPEG 4 disc onto the disc tray and the TV screen will show all its folders after a few seconds.
2. Select the folder you want by using the navigation buttons and then OK button to confirm.
3. The files will then be displayed, use the navigation buttons again to move to the desired file and press OK to select.
4. Press NEXT and PREV button to select track directly.
5. Press REPEAT button to change the current play mode.

KODAK PICTURE CD / JPEG CD PLAYBACK

Slide show of Kodak Picture CD after being loaded begins automatically;

Folders of JPEG picture CD after being loaded are displayed on the TV screen; use the navigation buttons to select the desired pictures to start playback.

Preview of the picture will be displayed while you scroll across the filenames.

Helpline No. 0161 975 0458

Web Support www.ikasu.tv

Model Number: DVO90092

12

Picture CD playback

PICTURE CD / JPEG CD OPERATIONS

1. Insert a picture CD into the CD tray.
2. Press repeat button during play to change the play modes. During playback, press STOP to enter preview mode.
3. Press NEXT button to skip to the next picture or PREV button to the previous picture.
(If no key is pressed for a few seconds, it will skip to next picture automatically.) Press play to resume normal play.
4. Press RIGHT and LEFT navigation buttons to rotate the picture Clockwise and anti-clockwise respectively.
5. Press UP navigation button to flip the picture vertically. Press DOWN navigation button to flip the picture horizontally.
6. Press ZOOM button continuously, the picture zooms in by 2, 3, 4 times or zooms out by 1/2, 1/3, 1/4 the original size. Press this button once more when the picture getting 1/4 size to return to the normal play. If the picture is enlarged, you may use the navigation buttons to view blocked parts of the picture.

USB/SD/MMC Card input

1. First slide the FUNCTION switch to DVB-T/DVD/USB/CARD position.
2. Plug a USB/SD/MMC in with either with music (MP3) video files (MPEG4 only) into the corresponding port after about 20 seconds the TV screen will show all its folders.
3. Use the navigation buttons to move between folders and the OK button to select.
4. Once you have picked a folder select a song or movie and press OK to activate.

Audio IN/Headphone/Microphone

For audio in connections simply connect from the audio out from something such as a MP3 player to the Audio IN on the front of the boombox, then switch the function button to the Audio IN and start playing the MP3 player.

For headphone connection simply attach a pair of 3.5mm jack headphones to the headphone slot at the top of the boombox.

To use a microphone simply attach to the MIC in on the front of the boombox

Helpline No. 0161 975 0458

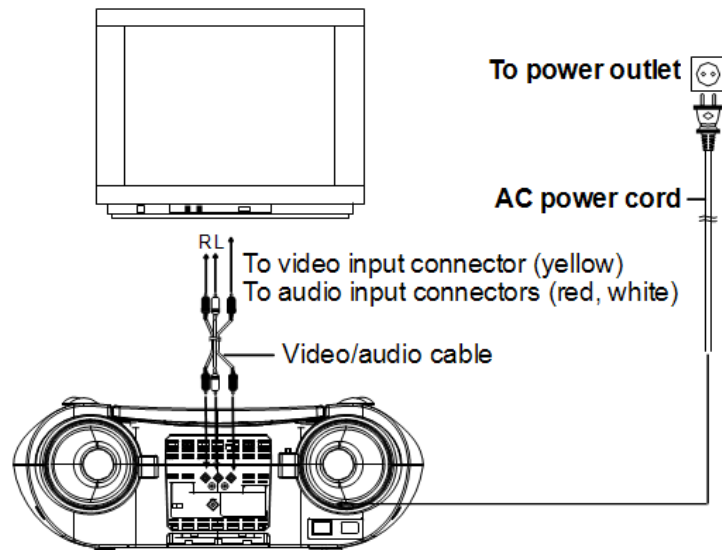
Web Support www.ikasu.tv

Model Number: DVO90092

13

Connecting to an external TV screen

In order to connect your boombox to a larger external screen you will first need to connect an AV cable from the red/white/yellow ports on the back of the boombox to the same ports on your TV IN as shown below. Then put your TV into AV mode and the screen should show up on your TV.



Helpline No. 0161 975 0458

Web Support www.ikasu.tv

Model Number: DV090092

Trouble shooting

- No power**
- Make sure the AC cord is securely plugged into AC socket and an AC outlet.
 - Turn the power off and then back on.
- Remote control does not work**
- Check that the battery is inserted in the "+" and "-" direction properly. The battery may be flat. Replace it with a new one.
 - Check that the signal transmission is directed at the remote control sensor on the DVD player. Remove the obstacle between the remote controller and remote control sensor.
- No picture or sound**
- Check that the A/V cables are securely connected.
 - Check that the disc is a DVD (region number 1 or all), DVD-RW or AUDIO CD. Do not use a disc that has scratches or dirt.
 - Check that the label-side of the disc is facing up.
 - The pick-up lens of the DVD player may be dirty. Contact the service center for lens cleaning. Check that the TV channel is set to VIDEO or AV if viewing with a TV.
 - Check image brightness and contrast settings. Check if TV signal is strong or not.
 - Check that the LCD display is turned on.
 - Check the volume setting. If set to zero, turn up volume level.
 - Check that the headphones are plugged into the PHONES socket. Speakers cannot be used with the headphones.

Helpline No. 0161 975 0458

Web Support www.ikasu.tv

Model Number: DV090092

15

Technical Support

TECHNICAL SUPPORT LINE

GENERAL SUPPORT CAN BE PROVIDED ON ALL
PRODUCTS PURCHASED FROM US

(Unfortunately we cannot provide support on products or components that we do not supply)

0161 975 0458

Calls cost National Rate, Unless dialling from 0161 area

CALLERS MUST BE MINIMUM OF 18 YEARS OF AGE
CALLERS MUST HAVE THE PERMISSION OF THE TELEPHONE SUBSCRIBER

ALL INFORMATION GIVEN IS CORRECT
AT THE DATE OF PUBLICATION - 09/09/2009

HOURS OF BUSINESS
MON – FRI 8.30am to 5.30pm (excludes bank holidays)

FASCIN8 LTD
14 EMBANKMENT BUSINESS PARK
VALE ROAD, HEATON MERSEY
STOCKPORT CHESHIRE, SK4 3GN

Alternatively visit our website for further support
www.ikasu.tv

Helpline No. 0161 975 0458

Web Support www.ikasu.tv

Model Number: DV090092

16